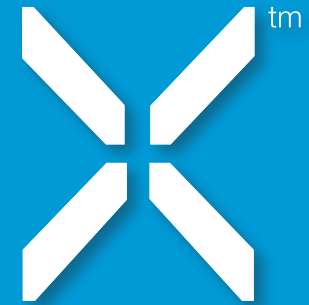


campus



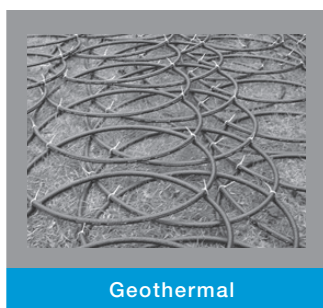
energy

progressive|ae

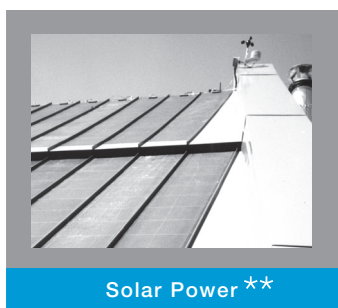
1811 4 Mile Rd NE  
Grand Rapids, MI 49525  
616 361 2664 OFFICE  
616 361 1493 FAX  
[www.progressiveae.com](http://www.progressiveae.com)



Biomass\*



Geothermal



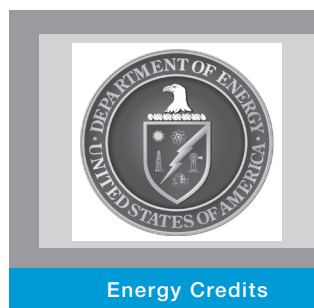
Solar Power\*\*



Wind



Rainwater Harvesting



Energy Credits

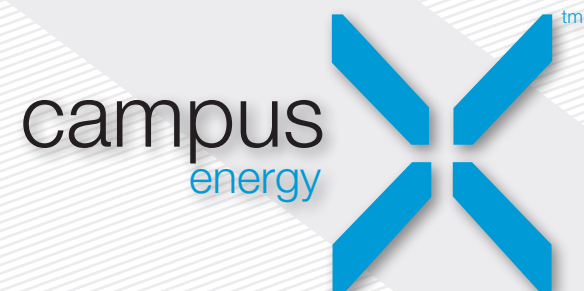
Progressive AE can help you and your staff determine your buildings' asset values. By studying your operational costs and helping you understand how your energy and systems can work more efficiently, we show you how to do more with less.

- energy modeling
- Energy Star evaluation
- energy audits
- facility assessments
- LEED EB
- retro-commissioning

progressive | ae

\* Central Michigan University biomass system commissioned in 1998

\*\* Aquinas College photovoltaic array



Corporate | Government | Healthcare | Industrial | Learning